



CONNECTICUT DEPARTMENT OF TRANSPORTATION

# ***SAFETY ALERT***

***FOR IMMEDIATE RELEASE***

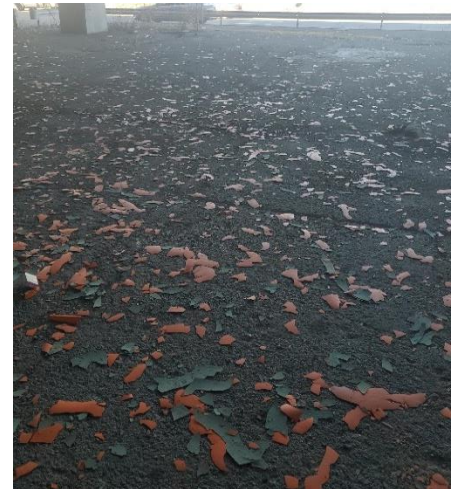
Safety Alert:  
SA-MED-021723

## **Bridge Structures Experiencing Sudden Release of Lead-Based Paint Chips**

Release Date: 02/17/23

Bridge structures state-wide have been experiencing a sudden, unexpected release of lead-based paint chips, which is believed to be related to the recent extreme swings in temperature. Although lead is a known health hazard, the existence of paint chips on the ground poses little danger to your health if a few common-sense practices are observed. Your goal is to reduce exposure and contain the hazard.

First, **do not handle or move the debris**. Cleanup efforts are already in progress and a larger state-wide mitigation plan is in development. Second, **avoid walking through or disturbing the debris**. Crushing the paint chips and tracking them to other locations on the soles of your shoes can increase the size of the contaminated area and increase your likelihood of exposure. Third, **when encountering areas of paint release on roadway travel surfaces, limit your time in areas where traffic is crushing paint chips** and possibly creating contaminated dust. Finally, take note of the location and the area of impact. Is it on the roadway, sidewalk, in a stream or river, or is it in a residential or school zone? **Record the information and inform your supervisor upon your return to your work facility.**



During the course of your normal duties, if you encounter areas that have been impacted by the sudden release of lead-based paint, following these few simple best-practices will either reduce or eliminate your chance of exposure to lead and help contain the hazardous material.

For more information about lead and its impact on health please visit:

<https://portal.ct.gov/DPH/Environmental-Health/Lead-Poisoning-Prevention-and-Control/About-Lead>

**Thank you for your support of CTDOT health and safety programs.  
Visit <http://www.ct.gov/dot/safetyconcern> to report an unsafe or unhealthy condition.**